

XCT60_Y 汽车起重机 / Truck Crane

产品简介

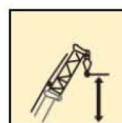
Brief introduction



60 t



44 m



59.8 m



XCT60_Y 广泛适用于建筑工地、城市改造、交通运输、港口、桥梁、矿场等场所和其它复杂的作业环境

XCT60_Y Truck crane is widely used for the lifting operations in general engineering projects, such as construction sites, urban renewal, communication and transportation, ports, bridges, and complex working environments.



XCT60_Y

- 五节“U型”44米主臂，最大起重能力：60吨，最大起升高度：59.8米，性能全面领先。
- 5-section boom of 44m with U-type profile is adopted; the max. lifting load is 60 t; the max. lifting height is 59.8 m; The performance takes the lead comprehensively.
- 整机耐高温设计，45℃持续作业不停机；整机防水和耐腐蚀设计，可靠性和零部件寿命大幅提升。
- The machine is designed to be high temperature resistance, so it can continuously work without downtime in ambient temperature of 45°C. The whole vehicle is also waterproof and corrosion resistant. The reliability and service life of parts are greatly improved.
- 操纵形式（机械或先导）、副臂形式（腹置或侧置）的多样性配置，可满足不同客户的需求。
- Abundant configurations of operating methods (mechanical control or pilot hydraulic proportional control) and jib types (swing-away jib or under slung jib) can meet the requirements of different customers.









回转机构

Slewing mechanism

- 单排四点接触球外齿式回转支承，360度回转
- Single-row four-point ball contact external tooth slewing ring, may continuously slew 360°.
- 具有动力控制或自由回转的功能，可无级调速
- Power control and free-sliding function are available, and speed may be infinitely regulated
- 回转速度为0-2r/min
- Slewing speed 0-2r/min





超强起重性能

Super lifting performance

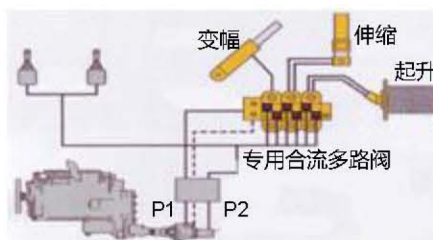
- 行业最长五节 44 米“U 型”主臂，主吊钩最大 13 倍率，性能领先同类产品 5%。顺序伸缩升级为任意伸缩，臂长变换更高效，中长臂性能更高；
- 5-section boom of 44 m with U-type profile is the longest of the same class in the industry; the max. parts of line is 13 for the main hook block. The performance is 5% higher than that of the competitors. The telescoping mode is updated from sequential telescoping to random telescoping. The change of boom length is more efficient, and the performance of medium-long boom is higher;
- 创新单板臂头与紧凑式臂尾结构，搭接比行业最大，吊臂承载力更强。
- Innovative single-plate boom head and compact boom tail structure, best overlapping ratio in its class and stronger boom load-bearing capacity;



新型节能液压系统

New energy-saving hydraulic system

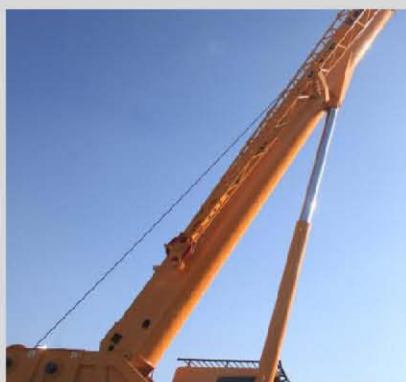
- 卷扬起落、伸缩伸、变幅起均采用双泵合流技术，变幅、伸缩作业效率全面领先对手。
- Dual-pump confluence technology is applied to the crane movements, such as hook up / hook down, boom out, as well as boom up, so that the working efficiency of elevating and telescoping operation gets ahead of all competing cranes.



起升机构

Hoisting mechanism

- 定量泵-变量马达开式液压系统
- Open type hydraulic system with variable displacement pump and constant displacement motor equipped
- 行星齿轮减速器、常闭式制动器
- Planetary gear reducer, normally closed brake
- 最大单绳拉力为45KN
- Max. single line pull 45KN
- 最大起升速度128m/min
- Max. hoisting speed 128m/min



变幅机构

Elevating mechanism

- 单变幅油缸，可靠性高
- Single elevating cylinder, high reliability
- 使用带负载补偿功能的变幅平衡阀
- The elevating balance valve with load compensation function



工况	代码	支腿	区域	臂长
主臂工况	0001	全伸	后方	10.0
主臂工况	0001	全伸	后方	14.4
主臂工况	0001	全伸	后方	18.8
主臂工况	0001	全伸	后方	23.2
主臂工况	0001	全伸	后方	27.6
主臂工况	1001	主伸	后方	10.0
主臂工况	1001	全伸	后方	14.4
主臂工况	1001	全伸	后方	18.8

工况自动规划技术

Automatic working condition planning technology

- 自动推荐最优工况
- Automatically recommend the most proper working conditions
- 简化查询与设置工况过程
- Searching and setting work condition simply



新型外观造型与人性化设计

New appearance and humanized design

- 新一代外观设计，整机刚劲有力，时尚的驾驶室与操纵室新外观，层次感与力量感完美结合；全面的人体工程学分析，人性化细节处理，打造驾驶轻松、操纵舒适，维护便捷的内在品质
- New generation appearance design presents power and vigor, such as the appearance of driver's cab and operator's cab, delivering the feeling of perfect combination of streamlining and strength; with ergonomic analysis and personalized consideration of details integrated, a quality product is created that is convenient to maintain, easy to drive and comfortable to operate.



立体空调风道

Three dimensional air vents

- 立体式送风，流速更细腻，避免冷热不均。
- Three dimensional air supply, optimized flow rate, avoiding uneven heating and cooling.



操纵室内即可完成回转锁止操作。
Slewing lock operation can be realized in the operator's cab.



操纵室标配大功率制冷空调，提升空调制冷效果，可适应52℃以上高温环境。
High-power air conditioner is available in the operator's cab with improved cooling effect, which can endure high temperature environment of 52℃.



动力传动系统

Drive train

- 重汽发动机，额定功率247kw，最大输出扭矩1350N.m
- Heavy truck group engine, rated power 247kw, max. torque 1350N.m
- 陕齿机械变速箱，软轴操纵，全同步器
- Mechanical transmission made by Shaanxi Gear Factory, with synchronizer. It is operated through flexible shaft.
- 最高车速90Km/h，最大爬坡能力38%
- Max. travel speed 90Km/h; max. grade ability 38%





低速大扭矩动力传动系统

Low-speed large-torque power drive system

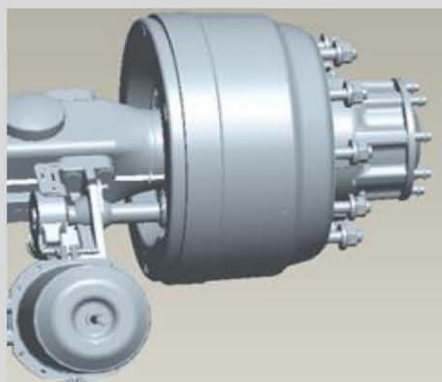
- 以低速大扭矩发动机和大速比、超速档变速箱为核心的全新动力平台，驱动性能强，承载能力高，稳定性好；
- The new power system consists of a low speed large torque engine and a transmission with high speed ratio and over drive contributes to strong driving performance, high load-bearing capacity and better stability.
- 实现了高动力性能与低油耗完美融合，行驶油耗降低7%，动力性能提高6%。
- High power performance and low fuel consumption are perfectly integrated, resulting in reduction by 7% in driving fuel consumption, improvement by 6% in power performance.



悬挂系统

Suspension system

- 前悬架采用钢板弹簧
- The front suspension consists of leaf springs
- 后悬架采用橡胶悬架，V型推力杆
- Rubber suspension with V-type push rod for rear suspensions



制动系统

Braking system

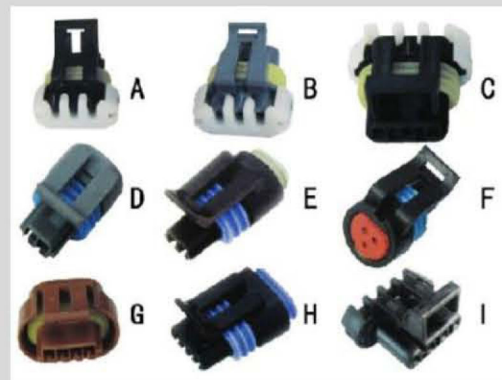
- 行车制动：脚踏板操纵的双回路气压制动。第一回路作用于一、二轴车轮上，第二回路作用于三、四轴车轮上。
- Service brake: controlled by foot pedal, double-circuit air pressure brake. The first circuit acts on the wheels of axles 1 and 2, and the second circuit acts on the wheels of axles 3 and 4.
- 驻车制动：弹簧储能制动，作用于2、3、4轴车轮。
- Parking brake: spring energy brake, acting on wheels of 2,3,4 axles.
- 辅助制动：发动机排气制动、发动机缸内缓速制动
- Auxiliary brake: engine exhaust brake+ engine compression brake.



铝合金燃油箱

Aluminium alloy fuel tank

- 外观质量好，耐腐蚀性强
- Good appearance quality and strong corrosion resistance.





新型外观造型与人性化设计

New appearance and humanized design

- 全覆盖式走台板，铝合金型材，品质感强，独立式轮包，层次丰富；
- Fully covered aluminum alloy deck, strong sense of quality; independent wheel fender, sense of plentiful layers;
- 铝型材防护栏，表面质量高、防腐蚀能强；
- Guard rails made of aluminum alloy, high quality and strong anti-corrosion capacity;
- 全新人机设计把手和扶梯，精良考究工艺制造，攀爬方便可靠。
- Ergonomically designed hand holds and hand rails, made by fine manufacture process, convenient and reliable for climbing.



高可靠性元器件

More reliable component

- 防水插接件，接插件内部带橡胶护套，防水性能极佳，防护等级达到IP67。
- Waterproof components, with protection level of IP67.
- 铝合金燃油箱，外观质量好，耐腐蚀，抗冲击能力强。
- Aluminium alloy fuel tank, good appearance quality, better corrosion resistance, and better shock resistance.



支腿作业灯夜间作业更安全

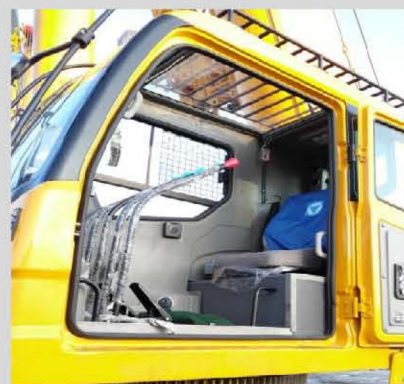
Outrigger working lamp makes night work safer



驾驶室

Driver's cab

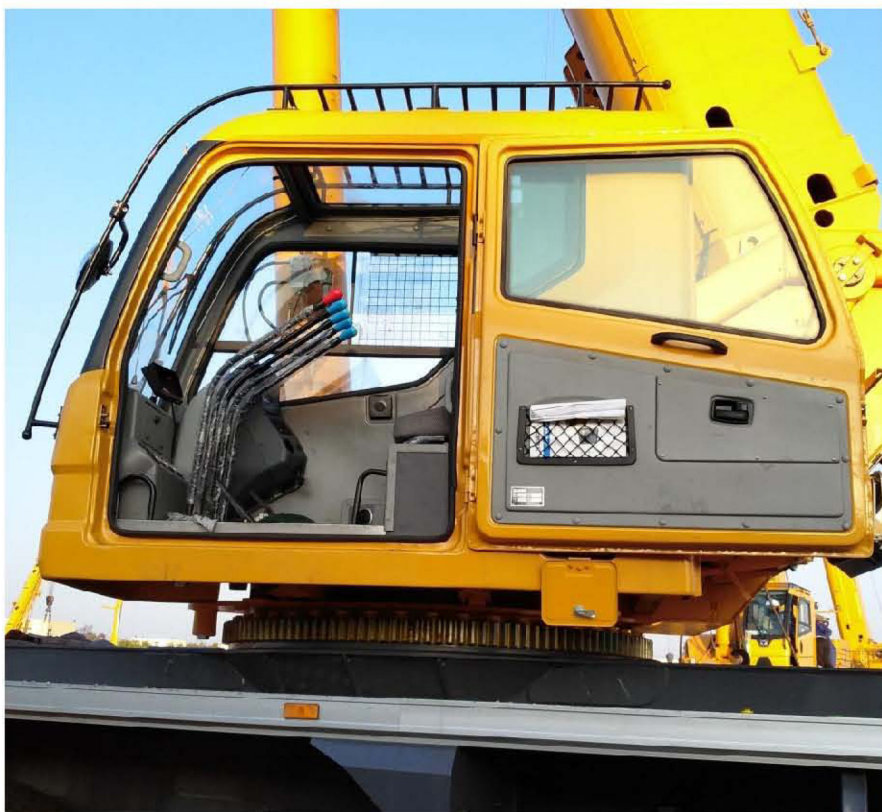
- 钢结构全宽豪华驾驶室，全封闭，密封性好，防腐蚀、软化内饰，装备豪华舒适。
- New full-dimension enclosed cab, luxury and comfort. It is designed to be leakproof, anti-corrosive and shockproof.
- 配置收放机、可调式座椅、简易卧铺、方向盘、安全玻璃、3只雨刷器、电动后视镜、电动门窗升降器、杂物箱。
- Equipped with radio, adjustable seats, simple sleeper, steering wheel, safety glass, 3 wipers, electrical adjustable mirrors, electrically operated door window and glove box.



徐工人机交互系统

XCMG man-machine interactive system

- 人机交互系统，实现了操作人员与起重机的友好对话。轻松掌控起重作业的各种状态信息，操纵更轻松、便捷
- Man-machine interactive system provides various working information for operator through establishing a friendly dialogue between operator and the crane, making the operation easier and convenient



操纵室

Operator's cab

- 全人机工学工作空间设计,作业更舒适,安全
- Ergonomically designed working space makes operation safer and more comfortable
- 5.7寸真彩色液晶显示屏
- 5.7 inch color screen



- 安全保护、吊装动作、操纵环境三个区域,控制便捷
- Three control areas for safety protection, lifting operation and operating environment make control easier and more convenient